

Your Key to Vascular Access



Product Catalogue

 **GAMBRO®**



Vascular Access

Product Overview

Short-Term Catheters

04-15

- | | |
|----------|--|
| Standard | <ul style="list-style-type: none">• Single / Double / Triple Lumen• Paediatric Single / Double Lumen |
| HighFlow | <ul style="list-style-type: none">• Double Lumen• Double Lumen with Dolphin® Coating• Double Lumen with Dolphin® Protect Coating |

Long-Term Catheters

16-21

- | | |
|-------------|--|
| Retrograde | <ul style="list-style-type: none">• EverFlow® Single Lumen• Pourchez RetrO™ |
| Anterograde | <ul style="list-style-type: none">• EverFlow® Double Lumen |

Fistula Needles

22-33

- | | |
|------------------|--|
| Standard Needles | <ul style="list-style-type: none">• Plume S |
| Safety Needles | <ul style="list-style-type: none">• Plume SP• Plume SP+ |
| Standard Needles | <ul style="list-style-type: none">• Nipro Fistula Needles |

Plasters

34-37

- TipStop Plaster
- Gambro Plaster XL

Accessories

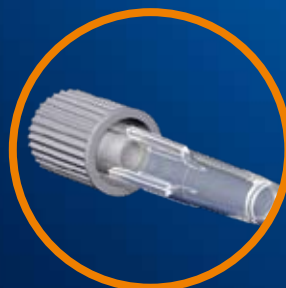
38-39

- Vessel Dilator
- Introducer Needle
- Calibrated Guidewire
- Luer-Lock Injection Cap
- Luer-Lock Protection Cap

GamCath® Short-Term Catheters

General Features & Benefits

- ⊕ Split-free bifurcation reduces clotting.
- ⊕ Thermosensitive polyurethane assures rigidity during insertion and patient comfort.
- ⊕ Transparent luer-lock connectors are resistant against deformation and cracking.





Standard

Single Lumen

Ordering Information

Single Lumen Catheters

| Product Name | Product Code | OD (F) | Length (mm) | Material | Details | Units per box |
|--------------|--------------|--------|-------------|----------|---------|---------------|
| GSC-815J | 100873 | 8 | 150 | PUR | curved | 10 |
| GSC-815 | 113197 | 8 | 150 | PUR | - | 10 |
| GSC-820 | 113196 | 8 | 200 | PUR | - | 10 |
| GSC-825 | 101805 | 8 | 250 | PUR | - | 10 |

Single Lumen Catheter Kits

| Product Name | Product Code | OD (F) | Length (mm) | Material | Details | Units per box |
|--------------|--------------|--------|-------------|----------|-----------|---------------|
| GSK-815 | 113195 | 8 | 150 | PUR | - | 5 |
| GSK-817,5 | 113194 | 8 | 175 | PUR | - | 5 |
| GSK-820 | 113193 | 8 | 200 | PUR | - | 5 |
| GSK-825 | 100825 | 8 | 250 | PUR | - | 5 |
| GSK-812,5J | 101110 | 8 | 125 | PUR | curved | 5 |
| GSK-815J | 101806 | 8 | 150 | PUR | curved | 5 |
| GSK-820J | 100824 | 8 | 200 | PUR | curved | 5 |
| GSK-815Y | 113192 | 8 | 150 | PUR | Y-adapter | 5 |
| GSK-820Y | 113191 | 8 | 200 | PUR | Y-adapter | 5 |

Kit contains: catheter, introducer needle GPN-177, calibrated guidewire GGW-3870J, luer-lock injection cap GIC-100, wound dressing[°]

Hemofiltration Catheter Kit

| Product Name | Product Code | OD (F) | Length (mm) | Material | Details | Units per box |
|--------------|--------------|--------|-------------|----------|---------|---------------|
| GHK-1011 | 100806 | 10 | 110 | PUR | - | 5 |

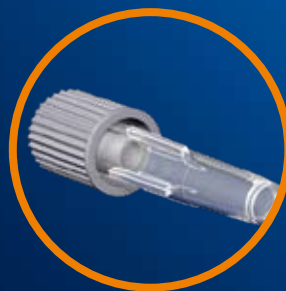
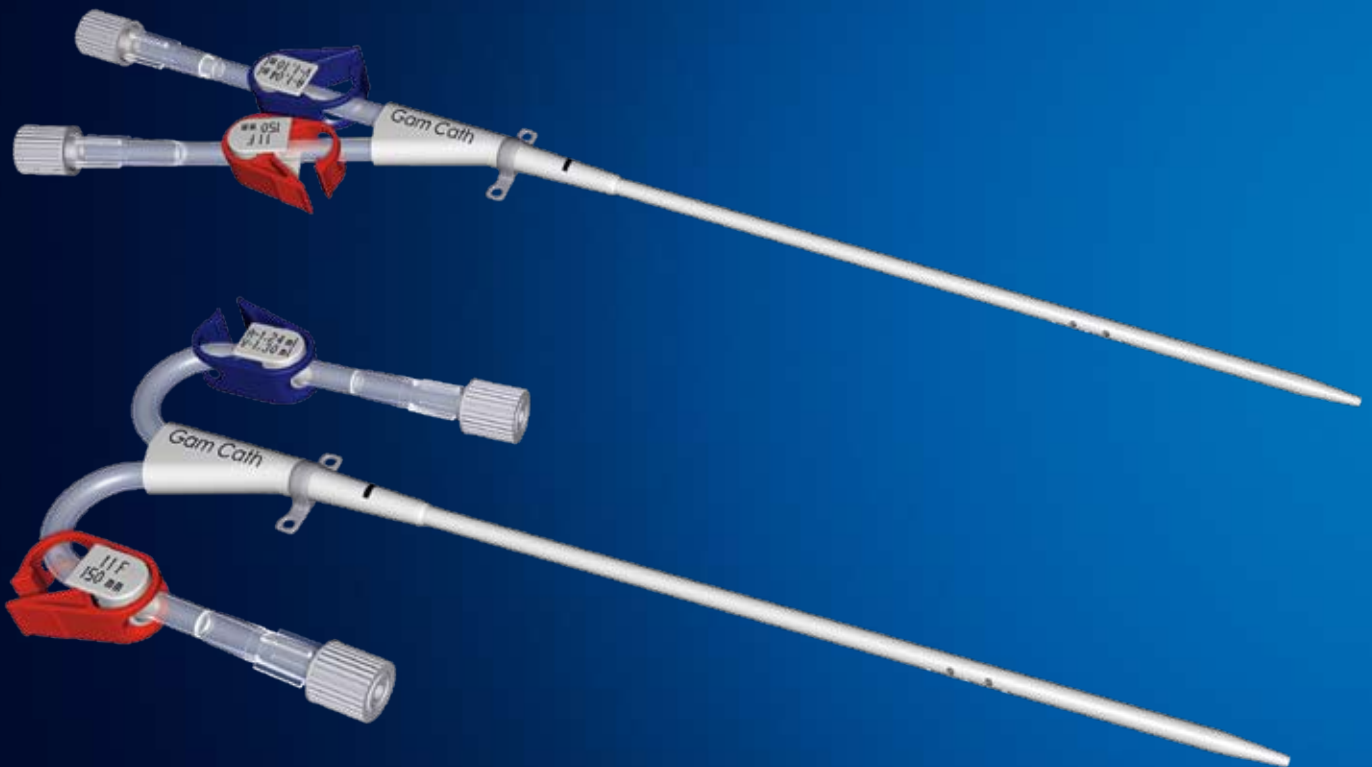
Kit contains: catheter, introducer needle GPN-177, calibrated guidewire GGW-3870J, luer-lock injection cap GIC-100, wound dressing[°], 1 venous and 1 arterial marker clamp[°]

[°] Not available as GamCath® Accessory.

GamCath® Short-Term Catheters

General Features & Benefits

- ⊕ Split-free bifurcation reduces clotting.
- ⊕ Thermosensitive polyurethane assures rigidity during insertion and patient comfort.
- ⊕ Transparent luer-lock connectors are resistant against deformation and cracking.

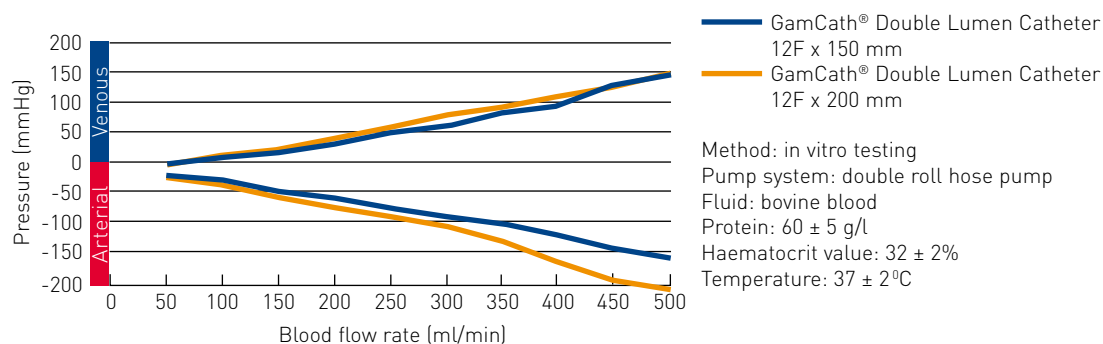




Standard

Double Lumen

Blood Flow Rate



Ordering Information

Double Lumen Catheters

| Product Name | Product Code | OD (F) | Length (mm) | Material | Details | Units per box |
|--------------|--------------|--------|-------------|----------|---------|---------------|
| GDC-1115 | 101797 | 11 | 150 | PUR | - | 5 |
| GDC-1117,5 | 101242 | 11 | 175 | PUR | - | 5 |
| GDC-1120 | 101799 | 11 | 200 | PUR | - | 5 |
| GDC-1125 | 101800 | 11 | 250 | PUR | - | 5 |
| GDC-1112,5J | 101028 | 11 | 125 | PUR | curved | 5 |
| GDC-1115J | 101798 | 11 | 150 | PUR | curved | 5 |
| GDC-1120J | 101295 | 11 | 200 | PUR | curved | 5 |

Unit contains: vessel dilator GVD-1115

Double Lumen Catheter Kits

| Product Name | Product Code | OD (F) | Length (mm) | Material | Details | Units per box |
|--------------|--------------|--------|-------------|----------|---------|---------------|
| GDK-1115 | 101801 | 11 | 150 | PUR | - | 5 |
| GDK-1117,5 | 103241 | 11 | 175 | PUR | - | 5 |
| GDK-1120 | 101802 | 11 | 200 | PUR | - | 5 |
| GDK-1125 | 101511 | 11 | 250 | PUR | - | 5 |
| GDK-1112,5J | 101169 | 11 | 125 | PUR | curved | 5 |
| GDK-1115J | 101509 | 11 | 150 | PUR | curved | 5 |
| GDK-1117,5J | 101379 | 11 | 175 | PUR | curved | 5 |
| GDK-1120J | 101510 | 11 | 200 | PUR | curved | 5 |
| GDK-1215 | 100842 | 12 | 150 | PUR | - | 5 |
| GDK-1220 | 101803 | 12 | 200 | PUR | - | 5 |

Kit contains: catheter, introducer needle GPN-177, calibrated guidewire GGW-3870J, 2 x luer-lock injection cap GIC-100, vessel dilator GVD-1115 for 11F, vessel dilator 12F x 150 mm for 12F[◊], wound dressing[◊]

[◊] Not available as GamCath® Accessory.

GamCath® Short-Term Catheters

General Features & Benefits

- ⊕ Split-free bifurcation reduces clotting.
- ⊕ Thermosensitive polyurethane assures rigidity during insertion and patient comfort.
- ⊕ Transparent luer-lock connectors are resistant against deformation and cracking.





Standard

Triple Lumen

Ordering Information

Triple Lumen Catheter Kits

| Product Name | Product Code | OD (F) | Length (mm) | Material | Details | Units per box |
|--------------|--------------|--------|-------------|----------|---------|---------------|
| GTK-1215 | 101808 | 12 | 150 | PUR | - | 5 |
| GTK-1217,5 | 103482 | 12 | 175 | PUR | - | 5 |
| GTK-1220 | 101809 | 12 | 200 | PUR | - | 5 |
| GTK-1215J | 101384 | 12 | 150 | PUR | curved | 5 |
| GTK-1220J | 101385 | 12 | 200 | PUR | curved | 5 |

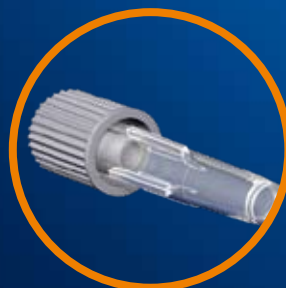
Kit contains: catheter, introducer needle GPN-177, calibrated guidewire GGW-3870J, 3 x luer-lock injection cap GIC-100, vessel dilator 12F x 150 mm[◊], wound dressing[◊]

◊ Not available as GamCath® Accessory.

GamCath® Short-Term Catheters

General Features & Benefits

- ⊕ Split-free bifurcation reduces clotting.
- ⊕ Thermosensitive polyurethane assures rigidity during insertion and patient comfort.
- ⊕ Transparent luer-lock connectors are resistant against deformation and cracking.

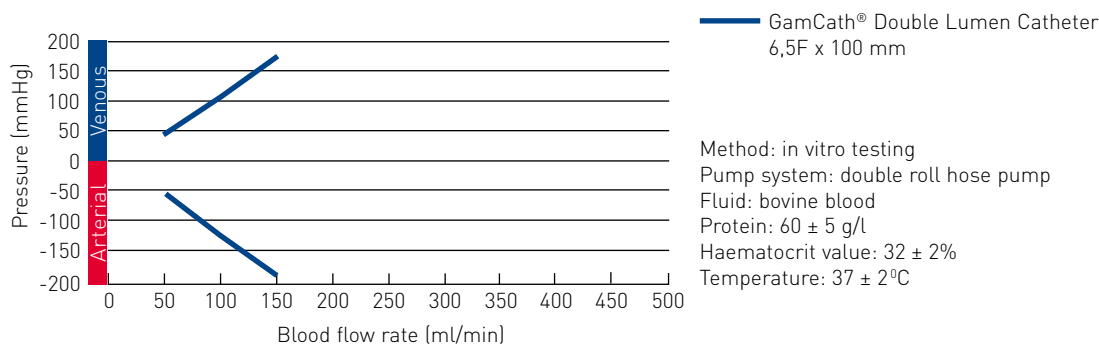




Standard

Paediatric Single / Double Lumen

Blood Flow Rate



Ordering Information

Single Lumen Catheter Kit

| Product Name | Product Code | OD (F) | Length (mm) | Material | Units per box |
|--------------|--------------|--------|-------------|----------|---------------|
| GSK-606P | 110644 | 6 | 60 | PUR | 5 |

Kit contains: catheter, introducer needle GPN-187, calibrated guidewire GGW-3250J, luer-lock injection cap GIC-100, vessel dilator 6F x 150 mm[◊], wound dressing[◊]

Double Lumen Catheter Kits

| Product Name | Product Code | OD (F) | Length (mm) | Material | Units per box |
|--------------|--------------|--------|-------------|----------|---------------|
| GDK-607,5P | 101208 | 6,5 | 75 | PUR | 5 |
| GDK-610P | 100943 | 6,5 | 100 | PUR | 5 |
| GDK-612,5P | 100843 | 6,5 | 125 | PUR | 5 |
| GDK-810P | 101512 | 8 | 100 | PUR | 5 |
| GDK-812,5P | 101513 | 8 | 125 | PUR | 5 |
| GDK-815P | 100944 | 8 | 150 | PUR | 5 |

Kit contains: catheter, introducer needle GPN-187, calibrated guidewire GGW-3250J for 6,5F / GGW-3570J for 8F, 2 x luer-lock injection cap GIC-100, vessel dilator 7F x 150 mm for 6,5F[◊] / vessel dilator GVD-815 for 8F, wound dressing[◊]

[◊] Not available as GamCath® Accessory.

GamCath® Short-Term Catheters

Additional Features & Benefits

In addition to the general Features & Benefits of the GamCath series, the HighFlow series offers:

- ⊕ Flow-optimized lumen design permits best flow rates at low arterial pressure.
- ⊕ Catheter tip design without side holes reduces clotting risk and prevents catheter suctioning to the vessel intima.

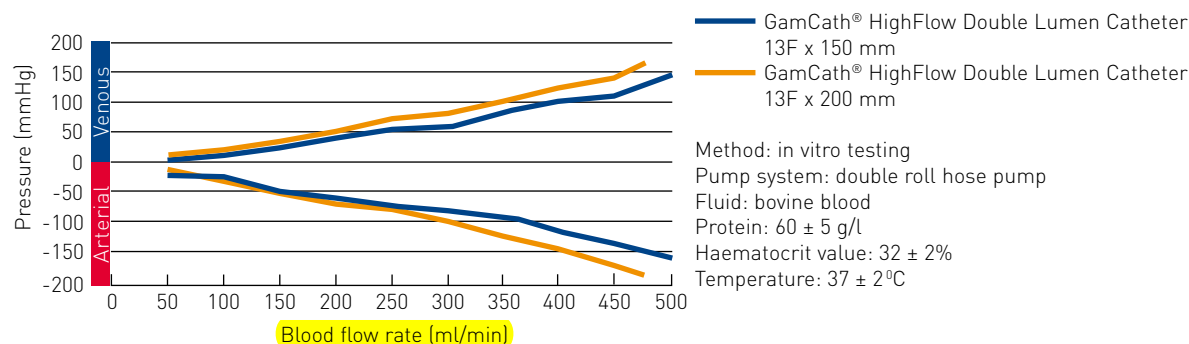


HighFlow

Double Lumen



Blood Flow Rate



Ordering Information

HighFlow Double Lumen Catheter Kits

| Product Name | Product Code | OD (F) | Length (mm) | Material | Details | Units per box |
|-------------------|---------------|-----------|-------------|------------|---------------|---------------|
| GDHK-1115 | 109711 | 11,5 | 150 | PUR | - | 5 |
| GDHK-1120 | 109712 | 11,5 | 200 | PUR | - | 5 |
| GDHK-1125 | 109713 | 11,5 | 250 | PUR | - | 5 |
| GDHK-1115J | 112572 | 11,5 | 150 | PUR | curved | 5 |
| GDHK-1120J | 112573 | 11,5 | 200 | PUR | curved | 5 |
| GDHK-1315 | 103358 | 13 | 150 | PUR | - | 5 |
| GDHK-1317,5 | 103357 | 13 | 175 | PUR | - | 5 |
| GDHK-1320 | 103356 | 13 | 200 | PUR | - | 5 |
| GDHK-1325 | 106661 | 13 | 250 | PUR | - | 5 |
| GDHK-1315J | 109535 | 13 | 150 | PUR | curved | 5 |
| GDHK-1320J | 109511 | 13 | 200 | PUR | curved | 5 |

Kit contains: catheter with inner dilator, introducer needle GPN-177, calibrated guidewire GGW-3270J for 11F / GGW-3870J for 13F, 2 x luer-lock injection cap GIC-100, vessel dilator 12F x 150 mm for 11F[°] / vessel dilator 13F x 150 mm for 13F[°], wound dressing[°]



[°] Not available as GamCath® Accessory.

GamCath® Short-Term Catheters

Additional Features & Benefits

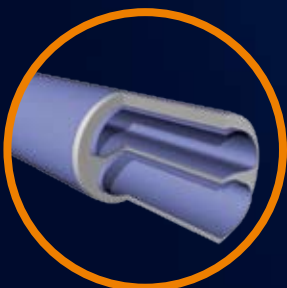
In addition to the general Features & Benefits of the GamCath and HighFlow series, the Dolphin and Dolphin Protect series offers:

⊕ **Dolphin Coating**

The natural microdomain surface minimizes interaction between plasma proteins and cells, deposits are reduced and bacterial inhibition is decreased.

⊕ **Dolphin Protect Coating**

The smooth surface and the Bi*-Additive reduce bacterial inhibition, thus Dolphin Protect is the first mode of action which ensures active antibacterial protection without releasing substances (e.g. antibiotics).

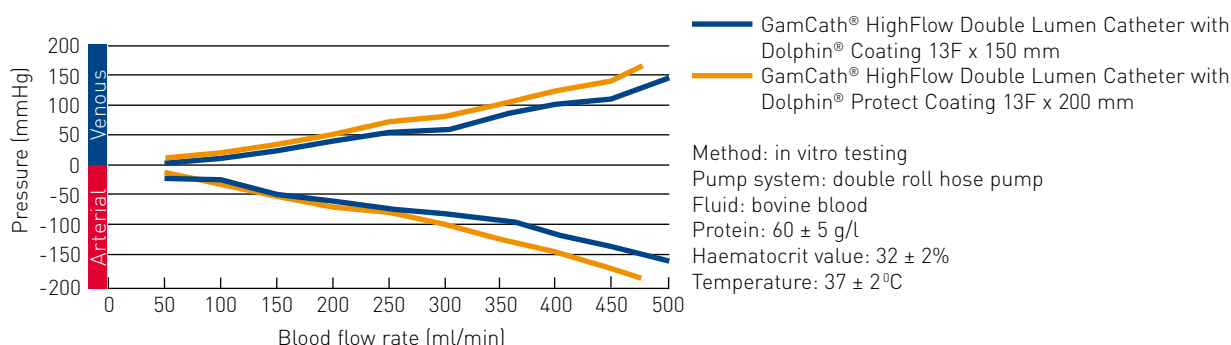




HighFlow

Double Lumen with Dolphin® / Dolphin® Protect Coating

Blood Flow Rate



Ordering Information

HighFlow Double Lumen Catheter Kits with Dolphin Coating

| Product Name | Product Code | OD (F) | Length (mm) | Material | Details | Units per box |
|----------------|--------------|--------|-------------|------------------------|---------|---------------|
| MS-GDHK-1315 | 103520 | 13 | 150 | PUR-PDMS Copolymerfilm | - | 5 |
| MS-GDHK-1317,5 | 103521 | 13 | 175 | PUR-PDMS Copolymerfilm | - | 5 |
| MS-GDHK-1320 | 103522 | 13 | 200 | PUR-PDMS Copolymerfilm | - | 5 |
| MS-GDHK-1325 | 106662 | 13 | 250 | PUR-PDMS Copolymerfilm | - | 5 |

Kit contains: catheter with inner dilator, introducer needle GPN-177, calibrated guidewire GGW-3870J, 2 x luer-lock injection cap GIC-100, vessel dilator 13F x 150 mm[◊], wound dressing[◊]

HighFlow Double Lumen Catheter Kits with Dolphin Protect Coating

| Product Name | Product Code | OD (F) | Length (mm) | Material | Details | Units per box |
|---------------|--------------|--------|-------------|-------------------------------|---------|---------------|
| MC-GDHK-1115 | 109708 | 11,5 | 150 | PUR-PDMS-PCL/Bi Copolymerfilm | - | 5 |
| MC-GDHK-1120 | 109709 | 11,5 | 200 | PUR-PDMS-PCL/Bi Copolymerfilm | - | 5 |
| MC-GDHK-1125 | 109710 | 11,5 | 250 | PUR-PDMS-PCL/Bi Copolymerfilm | - | 5 |
| MC-GDHK-1115J | 109683 | 11,5 | 150 | PUR-PDMS-PCL/Bi Copolymerfilm | curved | 5 |
| MC-GDHK-1120J | 109682 | 11,5 | 200 | PUR-PDMS-PCL/Bi Copolymerfilm | curved | 5 |
| MC-GDHK-1315 | 109585 | 13 | 150 | PUR-PDMS-PCL/Bi Copolymerfilm | - | 5 |
| MC-GDHK-1320 | 109584 | 13 | 200 | PUR-PDMS-PCL/Bi Copolymerfilm | - | 5 |
| MC-GDHK-1325 | 109705 | 13 | 250 | PUR-PDMS-PCL/Bi Copolymerfilm | - | 5 |
| MC-GDHK-1315J | 109706 | 13 | 150 | PUR-PDMS-PCL/Bi Copolymerfilm | curved | 5 |
| MC-GDHK-1320J | 109707 | 13 | 200 | PUR-PDMS-PCL/Bi Copolymerfilm | curved | 5 |

Kit contains: catheter with inner dilator, introducer needle GPN-177, calibrated guidewire GGW-3270J for 11F / GGW-3870J for 13F, 2 x luer-lock injection cap GIC-100, vessel dilator 12F x 150 mm for 11F[◊] / vessel dilator 13F x 150 mm for 13F[◊], wound dressing[◊]

[◊] Not available as GamCath® Accessory.

GamCath® Long-Term Catheters

Features & Benefits

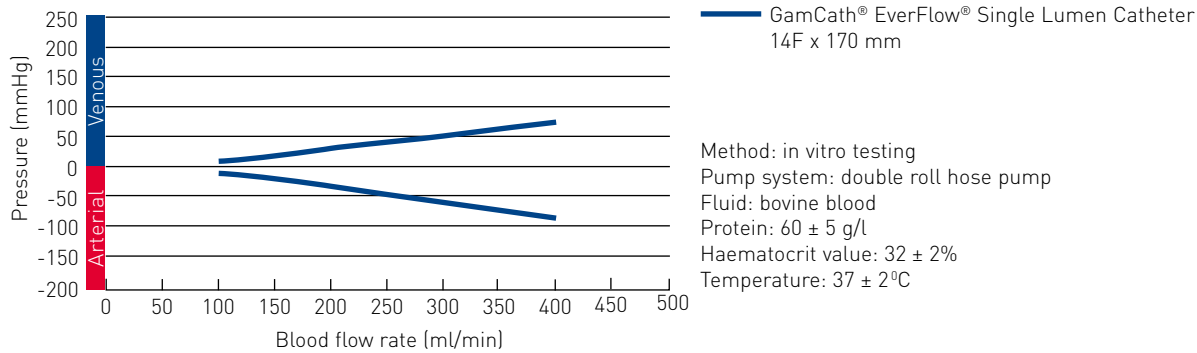
- ⊕ Catheter tip design without side holes reduces clotting risk and prevents catheter suctioning to the vessel intima.
- ⊕ Advanced silicone improves the adaption to the vessel and minimizes vessel trauma.
- ⊕ Implantable cuff provides infection barrier and secures internal catheter anchorage.





Retrograde EverFlow® Single Lumen

Blood Flow Rate



Ordering Information

EverFlow Single Lumen Catheters

| Product Name | Product Code | OD (F) | Implant Length (mm) | Body Length (mm) | Material | Units per box |
|--------------|--------------|--------|---------------------|------------------|----------|---------------|
| GSSC-1417 | 109974 | 14,4 | 170 | 220 | Silicone | 5 |
| GSSC-1426 | 109973 | 14,4 | 260 | 300 | Silicone | 5 |

Unit contains: catheter, luer-lock injection cap GIC-100, suture ring[◊], volume calculator[◊]

EverFlow Single Lumen Catheter Kits

| Product Name | Product Code | OD (F) | Implant Length (mm) | Body Length (mm) | Material | Units per box |
|--------------|--------------|--------|---------------------|------------------|----------|---------------|
| GSSK-1417 | 109972 | 14,4 | 170 | 220 | Silicone | 5 |
| GSSK-1426 | 109971 | 14,4 | 260 | 300 | Silicone | 5 |

Kit contains: catheter, introducer needle GPN-177, calibrated guidewire GGW-3870J, luer-lock injection cap GIC-100, 2 x replacement connector[◊], suture ring[◊], tunnelling trocar[◊], vessel dilator 13F x 150mm[◊], split sheath dilator system 16F x 150mm[◊], wound dressing[◊], volume calculator[◊]

[◊] Not available as GamCath® Accessory.

Spire Long-Term Catheters

Features & Benefits

- ⊕ Kink resistant design increases placement flexibility and minimizes complications.
- ⊕ Hubless design without extra-added tips.
- ⊕ Split-tip design and circumferential side holes increase the margin of functionality.
- ⊕ Long proximal pigtails allow customized length.

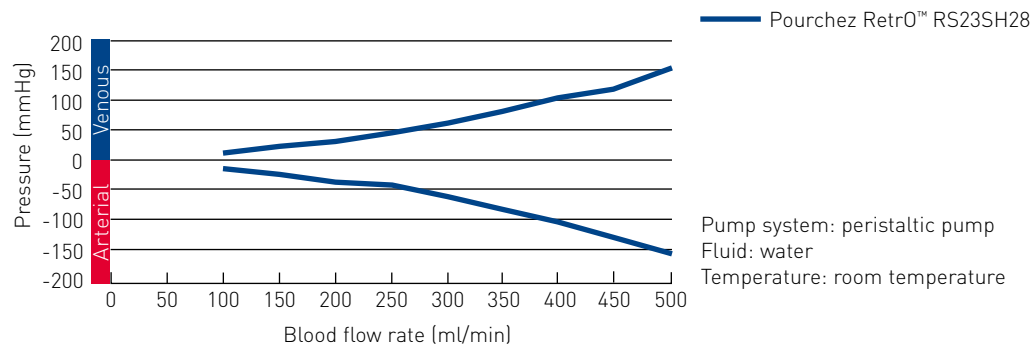




Retrograde

Pourchez RetrO™

Blood Flow Rate



Ordering Information

Pourchez RetrO Combo Kits

| Product Name | Product Code | OD (F) | Implant Length (mm) | Body Length (mm) | Material | Units per box |
|--------------|--------------|---------|---------------------|------------------|----------|---------------|
| RS19SH24 | 109735 | 10 x 20 | 190 | 240 | Silicone | 5 |
| RS23SH28 | 109744 | 10 x 20 | 230 | 280 | Silicone | 5 |
| RS27SH32 | 109743 | 10 x 20 | 270 | 320 | Silicone | 5 |
| RS31SH36 | 109742 | 10 x 20 | 310 | 360 | Silicone | 5 |
| RS35SH40 | 109741 | 10 x 20 | 350 | 400 | Silicone | 5 |

Kit contains: Pourchez RetrO catheter, 18G introducer needle, 12 ml syringe, 2 x J / straight 0,038" guidewire, 12F dilator, 14F dilator, 16F dilator, 6F sheath / dilator, 2 x 5F SafeTrac intracatheter dilator, scalpel #11, tunnelling rod, tunnelling sheath, 2 x injection adapter / tunneller, suture ring, 4 x gauze sponge, wound dressing, 2 x injection sealing cap (latex free), 2 x colour-coded extension adapter, 4 x flat clamp and warning label (latex free)

Pourchez RetrO Repair Kit

| Product Name | Product Code | Units per box |
|--------------|--------------|---------------|
| PRRK5 | 107038 | 5 |

Kit contains: 2 x colour-coded extension adapter, 2 x flat clamp, 2 x injection sealing cap (latex free)



GamCath® Long-Term Catheters

Features & Benefits

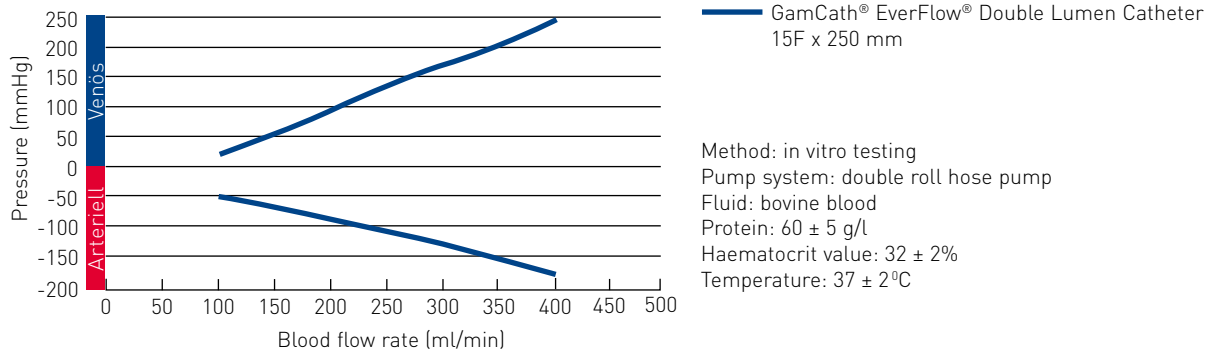
- ⊕ Flow-optimized lumen design permits best flow rates at low arterial pressure.
- ⊕ Catheter tip design without side holes reduces clotting risk and prevents catheter suctioning to the vessel intima.
- ⊕ Advanced silicone improves the adaption to the vessel and minimizes vessel trauma.
- ⊕ Implantable cuff provides infection barrier and secures internal catheter anchorage.





Anterograde EverFlow® Double Lumen

Blood Flow Rate



Ordering Information

EverFlow Double Lumen Catheter Kits

| Product Name | Product Code | OD (F) | Implant Length (mm) | Body Length (mm) | Material | Units per box |
|--------------|--------------|--------|---------------------|------------------|----------|---------------|
| GDSK-1517 | 109324 | 15 | 170 | 240 | Silicone | 5 |
| GDSK-1521 | 109323 | 15 | 210 | 280 | Silicone | 5 |
| GDSK-1525 | 109327 | 15 | 250 | 320 | Silicone | 5 |
| GDSK-1529 | 109326 | 15 | 290 | 360 | Silicone | 5 |

Kit contains: catheter, introducer needle GPN-177, calibrated guidewire GGW-3870J, 2 x luer-lock injection cap GIC-100, suture ring[◊], tunnelling trocar[◊], vessel dilator 13F x 150mm[◊], split sheath dilator system 16F x 150mm[◊], wound dressing[◊]

◊ Not available as GamCath® Accessory.

Fistula Needles

General Features & Benefits

- ⊕ Rotating hub with colour-coded marks.
- ⊕ Metallic part of the needle carefully polished and coated using a new siliconization technique.
- ⊕ Oval Back-Eye on the arterial needle.
- ⊕ Specially designed sharp-edged atraumatic facet cut.
- ⊕ Large and ergonomic wing design.



Standard Needles

Plume S

Ordering Information

Arterial

| Product Name | Product Code | Needle OD (G) | Tube Length (mm) | Needle Length (mm) | Units per box |
|--------------------|--------------|---------------|------------------|--------------------|---------------|
| Plume S A 14 L15 G | 100468 | 14 | 150 | 25 | 50 |
| Plume S A 14 L30 G | 101985 | 14 | 300 | 25 | 50 |
| Plume S A 15 L15 G | 101986 | 15 | 150 | 25 | 50 |
| Plume S A 15 L30 G | 101987 | 15 | 300 | 25 | 50 |
| Plume S A 15 L50 G | 100648 | 15 | 500 | 25 | 50 |
| Plume S A 15 M15 G | 101988 | 15 | 150 | 20 | 50 |
| Plume S A 15 M30 G | 101618 | 15 | 300 | 20 | 50 |
| Plume S A 16 L15 G | 101989 | 16 | 150 | 25 | 50 |
| Plume S A 16 L30 G | 101619 | 16 | 300 | 25 | 50 |
| Plume S A 16 L50 G | 107171 | 16 | 500 | 25 | 50 |
| Plume S A 16 M15 G | 101325 | 16 | 150 | 20 | 50 |
| Plume S A 16 M30 G | 101326 | 16 | 300 | 20 | 50 |
| Plume S A 16 S15 G | 103346 | 16 | 150 | 15 | 50 |
| Plume S A 17 L15 G | 101327 | 17 | 150 | 25 | 50 |
| Plume S A 17 L30 G | 101072 | 17 | 300 | 25 | 50 |
| Plume S A 17 M15 G | 101620 | 17 | 150 | 20 | 50 |
| Plume S A 17 M30 G | 101621 | 17 | 300 | 20 | 50 |
| Plume S A 17 S15 G | 103432 | 17 | 150 | 15 | 50 |

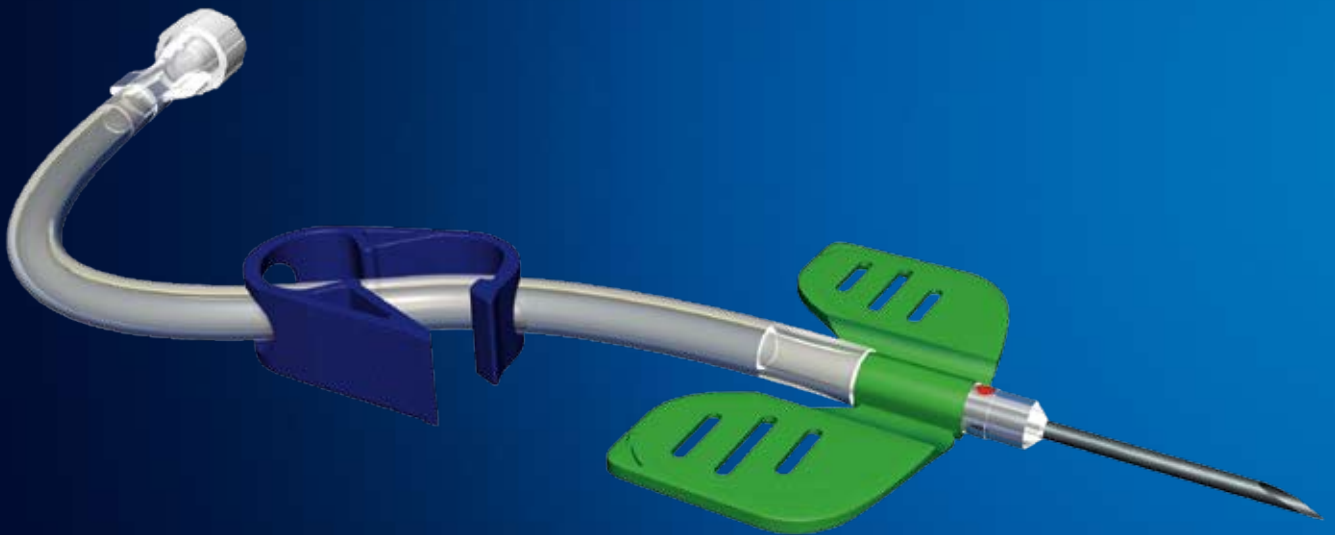
AV-Set

| Product Name | Product Code | Needle OD (G) | Tube Length (mm) | Needle Length (mm) | Units per box |
|---------------------|--------------|---------------|------------------|--------------------|---------------|
| Plume S AV 15 L15 G | 101263 | 15 | 150 | 25 | 50 |
| Plume S AV 15 M15 G | 107654 | 15 | 150 | 20 | 50 |
| Plume S AV 15 S15 G | 109605 | 15 | 150 | 15 | 50 |
| Plume S AV 16 L15 G | 101990 | 16 | 150 | 25 | 50 |
| Plume S AV 16 M15 G | 101264 | 16 | 150 | 20 | 50 |
| Plume S AV 16 S15 G | 107652 | 16 | 150 | 15 | 50 |
| Plume S AV 17 M15 G | 106230 | 17 | 150 | 20 | 50 |

Fistula Needles

General Features & Benefits

- ⊕ Rotating hub with colour-coded marks.
- ⊕ Metallic part of the needle carefully polished and coated using a new siliconization technique.
- ⊕ Oval Back-Eye on the arterial needle.
- ⊕ Specially designed sharp-edged atraumatic facet cut.
- ⊕ Large and ergonomic wing design.



Standard Needles

Plume S

Ordering Information

Venous

| Product Name | Product Code | Needle OD (G) | Tube Length (mm) | Needle Length (mm) | Units per box |
|--------------------|--------------|---------------|------------------|--------------------|---------------|
| Plume S V 14 L15 G | 106231 | 14 | 150 | 25 | 50 |
| Plume S V 14 L30 G | 101429 | 14 | 300 | 25 | 50 |
| Plume S V 15 L15 G | 101991 | 15 | 150 | 25 | 50 |
| Plume S V 15 L30 G | 101622 | 15 | 300 | 25 | 50 |
| Plume S V 15 L50 G | 101623 | 15 | 500 | 25 | 50 |
| Plume S V 15 M15 G | 101992 | 15 | 150 | 20 | 50 |
| Plume S V 15 M30 G | 101073 | 15 | 300 | 20 | 50 |
| Plume S V 15 S15 G | 107782 | 15 | 150 | 15 | 50 |
| Plume S V 16 L15 G | 101993 | 16 | 150 | 25 | 50 |
| Plume S V 16 L30 G | 101624 | 16 | 300 | 25 | 50 |
| Plume S V 16 L50 G | 107783 | 16 | 500 | 25 | 50 |
| Plume S V 16 M15 G | 101994 | 16 | 150 | 20 | 50 |
| Plume S V 16 M30 G | 100746 | 16 | 300 | 20 | 50 |
| Plume S V 16 S15 G | 106975 | 16 | 150 | 15 | 50 |
| Plume S V 17 L15 G | 102751 | 17 | 150 | 25 | 50 |
| Plume S V 17 L30 G | 100878 | 17 | 300 | 25 | 50 |
| Plume S V 17 M15 G | 101430 | 17 | 150 | 20 | 50 |
| Plume S V 17 M30 G | 101626 | 17 | 300 | 20 | 50 |
| Plume S V 17 S15 G | 106974 | 17 | 150 | 15 | 50 |

Single-Needle

| Product Name | Product Code | Needle OD (G) | Tube Length (mm) | Needle Length (mm) | Units per box |
|--------------------|--------------|---------------|------------------|--------------------|---------------|
| Plume S Y 15 L10 G | 101995 | 15 | 100 | 25 | 50 |
| Plume S Y 15 M10 G | 100968 | 15 | 100 | 20 | 50 |
| Plume S Y 15 S10 G | 106976 | 15 | 100 | 15 | 50 |
| Plume S Y 16 L10 G | 101996 | 16 | 100 | 25 | 50 |
| Plume S Y 16 M10 G | 100399 | 16 | 100 | 20 | 50 |
| Plume S Y 17 L10 G | 100151 | 17 | 100 | 25 | 50 |
| Plume S Y 17 M10 G | 106233 | 17 | 100 | 20 | 50 |

Fistula Needles

Additional Features & Benefits

In addition to the general Features & Benefits of the Plume S series, the Plume SP series offers:

- ⊕ Easy unlocking system offers automatic protection while removing and disposing the needles and thus protection against needlestick injuries and infections.



Safety Needles

Plume SP

Ordering Information

Arterial

| Product Name | Product Code | Needle OD (G) | Tube Length (mm) | Needle Length (mm) | Units per box |
|---------------------|--------------|---------------|------------------|--------------------|---------------|
| Plume SP A 15 L15 G | 106226 | 15 | 150 | 25 | 50 |
| Plume SP A 15 L30 G | 106227 | 15 | 300 | 25 | 50 |
| Plume SP A 15 M30 G | 109117 | 15 | 300 | 20 | 50 |
| Plume SP A 16 L15 G | 106228 | 16 | 150 | 25 | 50 |
| Plume SP A 16 L30 G | 106229 | 16 | 300 | 25 | 50 |
| Plume SP A 16 M30 G | 109115 | 16 | 300 | 20 | 50 |

Venous

| Product Name | Product Code | Needle OD (G) | Tube Length (mm) | Needle Length (mm) | Units per box |
|---------------------|--------------|---------------|------------------|--------------------|---------------|
| Plume SP V 15 L15 G | 106234 | 15 | 150 | 25 | 50 |
| Plume SP V 15 L30 G | 106235 | 15 | 300 | 25 | 50 |
| Plume SP V 15 M30 G | 109118 | 15 | 300 | 20 | 50 |
| Plume SP V 16 L15 G | 106236 | 16 | 150 | 25 | 50 |
| Plume SP V 16 L30 G | 106237 | 16 | 300 | 25 | 50 |
| Plume SP V 16 M30 G | 109116 | 16 | 300 | 20 | 50 |

AV-Set

| Product Name | Product Code | Needle OD (G) | Tube Length (mm) | Needle Length (mm) | Units per box |
|----------------------|--------------|---------------|------------------|--------------------|---------------|
| Plume SP AV 15 M30 G | 109752 | 15 | 300 | 20 | 50 |
| Plume SP AV 16 M15 G | 109114 | 16 | 150 | 20 | 50 |
| Plume SP AV 17 M15 G | 109113 | 17 | 150 | 20 | 50 |

Fistula Needles

Additional Features & Benefits

In addition to the general Features & Benefits of the Plume S and SP series, the Plume SP+ series offers:

- ⊕ Transparent protection sheath for easy identification of the intravascular position after puncture, even in case of a short blood column.
- ⊕ Shorter protection sheath for easy fixation with less movement reduces irritation at the puncture site.
- ⊕ Longer unlocking latch at ergonomic position for easy handling with gloves.



Safety Needles

Plume SP+

Ordering Information

Arterial

| Product Name | Product Code | Needle OD (G) | Tube Length (mm) | Needle Length (mm) | Units per box |
|----------------------|--------------|---------------|------------------|--------------------|---------------|
| Plume SP+ A 15 M30 G | 112655 | 15 | 300 | 20 | 50 |
| Plume SP+ A 16 M30 G | 112656 | 16 | 300 | 20 | 50 |

Venous

| Product Name | Product Code | Needle OD (G) | Tube Length (mm) | Needle Length (mm) | Units per box |
|----------------------|--------------|---------------|------------------|--------------------|---------------|
| Plume SP+ V 15 M30 G | 112614 | 15 | 300 | 20 | 50 |
| Plume SP+ V 16 M30 G | 112615 | 16 | 300 | 20 | 50 |

AV-Set

| Product Name | Product Code | Needle OD (G) | Tube Length (mm) | Needle Length (mm) | Units per box |
|-----------------------|--------------|---------------|------------------|--------------------|---------------|
| Plume SP+ AV 15 M15 G | 112963 | 15 | 150 | 20 | 50 |
| Plume SP+ AV 16 M15 G | 112964 | 16 | 150 | 20 | 50 |
| Plume SP+ AV 17 M15 G | 112965 | 17 | 150 | 20 | 50 |

Fistula Needles

Features & Benefits

- ⊕ Oval large Back-Eye avoids suctioning to the vessel intima.
- ⊕ Colour-coded bevel index for clear indication of needle position.
- ⊕ Premium luer-lock connector with wing for safe connection to the bloodline system.



Standard Needles

Nipro Fistula Needles

Ordering Information

Arterial

| Product Name | Product Code | Needle OD (G) | Tube Length (mm) | Needle Length (mm) | Details | Units per box |
|------------------|--------------|---------------|------------------|--------------------|-------------|---------------|
| Nipro F 14 AS G | 101238 | 14 | 150 | 25 | - | 50 |
| Nipro F 14 BS G | 100803 | 14 | 300 | 25 | - | 50 |
| Nipro F 15 AS G | 101109 | 15 | 150 | 25 | - | 50 |
| Nipro F 15 RAS G | 106174 | 15 | 150 | 20 | - | 50 |
| Nipro F 15 BS G | 100767 | 15 | 300 | 25 | - | 50 |
| Nipro F 15 LBS G | 100941 | 15 | 300 | 30 | - | 50 |
| Nipro F 16 AFS G | 106177 | 16 | 150 | 25 | Fixed Wings | 50 |
| Nipro F 16 AS G | 101132 | 16 | 150 | 25 | - | 50 |
| Nipro F 16 MAS G | 106180 | 16 | 150 | 15 | - | 50 |
| Nipro F 16 RAS G | 104175 | 16 | 150 | 20 | - | 50 |
| Nipro F 16 BFS G | 102176 | 16 | 300 | 25 | Fixed Wings | 50 |
| Nipro F 16 BS G | 101240 | 16 | 300 | 25 | - | 50 |
| Nipro F 17 AS G | 101293 | 17 | 150 | 25 | - | 50 |
| Nipro F 17 MAS G | 106185 | 17 | 150 | 15 | - | 50 |
| Nipro F 17 RAS G | 106186 | 17 | 150 | 20 | - | 50 |
| Nipro F 17 BFS G | 102179 | 17 | 300 | 25 | Fixed Wings | 50 |
| Nipro F 17 BS G | 100959 | 17 | 300 | 25 | - | 50 |

Venous

| Product Name | Product Code | Needle OD (G) | Tube Length (mm) | Needle Length (mm) | Details | Units per box |
|-----------------|--------------|---------------|------------------|--------------------|-------------|---------------|
| Nipro F 14 A G | 101499 | 14 | 150 | 25 | - | 50 |
| Nipro F 15 A G | 101374 | 15 | 150 | 25 | - | 50 |
| Nipro F 15 RA G | 106173 | 15 | 150 | 20 | - | 50 |
| Nipro F 15 B G | 100506 | 15 | 300 | 25 | - | 50 |
| Nipro F 15 BF G | 106175 | 15 | 300 | 25 | Fixed Wings | 50 |
| Nipro F 16 A G | 101204 | 16 | 150 | 25 | - | 50 |
| Nipro F 16 MA G | 106178 | 16 | 150 | 15 | - | 50 |
| Nipro F 16 RA G | 106179 | 16 | 150 | 20 | - | 50 |
| Nipro F 16 B G | 101502 | 16 | 300 | 25 | - | 50 |
| Nipro F 16 BF G | 106181 | 16 | 300 | 25 | Fixed Wings | 50 |
| Nipro F 17 A G | 100740 | 17 | 150 | 25 | - | 50 |
| Nipro F 17 RA G | 106184 | 17 | 150 | 20 | - | 50 |
| Nipro F 17 B G | 100870 | 17 | 300 | 25 | - | 50 |

Fistula Needles

Features & Benefits

- ⊕ Colour-coded wings and packaging clearly indicating the gauge size.
- ⊕ Soft tubing with anti-kinking properties.
- ⊕ Excellent needle quality for smooth treatments.



Standard Needles

Nipro Fistula Needles

Ordering Information

Blunt

| Product Name | Product Code | Needle OD (G) | Tube Length (mm) | Needle Length (mm) | Units per box |
|------------------------|--------------|---------------|------------------|--------------------|---------------|
| Nipro Blunt F 14 BS G | 112803 | 14 | 300 | 25 | 50 |
| Nipro Blunt F 15 BS G | 112804 | 15 | 300 | 25 | 50 |
| Nipro Blunt F 16 BS G | 112805 | 16 | 300 | 25 | 50 |
| Nipro Blunt F 17 BS G | 112806 | 17 | 300 | 25 | 50 |
| Nipro Blunt F 15 RBS G | 109530 | 15 | 300 | 20 | 50 |
| Nipro Blunt F 16 RBS G | 109538 | 16 | 300 | 20 | 50 |
| Nipro Blunt F 17 RBS G | 109537 | 17 | 300 | 20 | 50 |

Single-Needle

| Product Name | Product Code | Needle OD (G) | Tube Length (mm) | Needle Length (mm) | Units per box |
|--------------------|--------------|---------------|------------------|--------------------|---------------|
| Nipro SN F 14 AS G | 106190 | 14 | 150 | 25 | 50 |
| Nipro SN F 15 AS G | 100997 | 15 | 150 | 25 | 50 |
| Nipro SN F 16 AS G | 101294 | 16 | 150 | 25 | 50 |

AV-Set

| Product Name | Product Code | Needle OD (G) | Tube Length (mm) | Needle Length (mm) | Units per box |
|------------------------|--------------|---------------|------------------|--------------------|---------------|
| Nipro Set F 16 AS/A G | 106203 | 16 | 150 | 25 | 25 |
| Nipro Set F 16 RAS/A G | 106204 | 16 | 150 | 20 | 25 |
| Nipro Set F 17 RAS/A G | 106205 | 17 | 150 | 20 | 25 |

Plaster

Features & Benefits

⊕ **Haemostasis in Extreme Situations**

Among anticoagulation or coagulation dysfunction persuades the precise haemostasis. Bland, constant pressure to the puncture site, fast wound healing.

⊕ **Blood Coagulation Support**

Alginate extracted from brown alga transforms when contacting with fluids in a gel, which supports body's own coagulation. Less secondary haemorrhage, rapid recovery.

⊕ **Eudermic**

Hypoallergenic wings are skin-sensitive and easy to detach. Even among cortisone therapy and with dry skin applicable.



TipStop Plaster

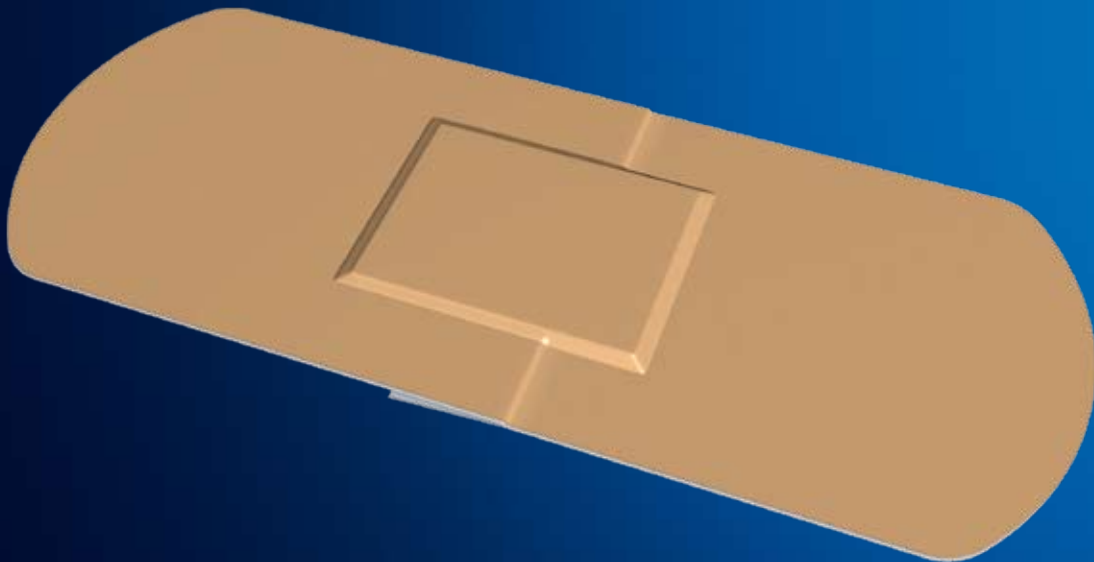
Ordering Information

| <u>TipStop Plaster</u> | | | |
|------------------------|--------------|-----------------|---------------|
| Product Name | Product Code | Dimensions (mm) | Units per box |
| TipStop Plaster | 101997 | 100 x 28 x 18 | 96 |

Plaster

Features & Benefits

- ⊕ Easy to apply.
- ⊕ Monitored wound compression ensures maximum safety.
- ⊕ Facile and painless removal.
- ⊕ Skin-friendly adhesive agent reduces skin irritation.
- ⊕ No need for a second dressing.



Gambro Plaster XL

Ordering Information

Gambro Plaster XL

| Product Name | Product Code | Dimensions (mm) | Units per box |
|-------------------|--------------|---------------------------------------|---------------|
| Gambro Plaster XL | 101504 | 30 x 72 (Bandage) 15 x 20 (Sponge) | 500 |

GamCath® Accessories

Features & Benefits

- ⊕ Absolute dimensional accuracy
- ⊕ Maximum safety
- ⊕ Easy availability



Vessel Dilator / Introducer Needle / Calibrated Guidewire / Luer-Lock Injection Cap / Luer-Lock Protection Cap

Ordering Information

Accessories

| Product Name | Product Code | OD (F/G/") | Length (mm) | Details | Units per box |
|--------------|--------------|------------|-------------|--|---------------|
| GVD-815 | 101796 | 8 | 150 | Vessel Dilator | 15 |
| GVD-1015 | 101508 | 10 | 150 | Vessel Dilator | 15 |
| GVD-1115 | 100593 | 11 | 150 | Vessel Dilator | 15 |
| GPN-177 | 101027 | 17 | 70 | Introducer Needle | 50 |
| GPN-187 | 100899 | 18 | 70 | Introducer Needle | 50 |
| GGW-3250J | 103488 | 0,032 | 500 | Calibrated Guidewire with „J“-tip | 15 |
| GGW-3570J | 102943 | 0,035 | 700 | Calibrated Guidewire with „J“-tip | 15 |
| GGW-3870J | 101795 | 0,038 | 700 | Calibrated Guidewire with „J“-tip | 15 |
| GIC-100 | 101507 | - | - | Luer-Lock Injection Cap (Synthetic Isoprene) | 100 |
| E-10 | 106806 | - | - | Luer-Lock Protection Cap | 100 |

International Conversion Table

| Gauge (G) | Millimeter (mm) | Inch (") |
|-----------|-----------------|----------|
| 14 | 2,1 | 0,083 |
| 15 | 1,8 | 0,072 |
| 16 | 1,6 | 0,065 |
| 17 | 1,4 | 0,058 |
| 18 | 1,2 | 0,049 |

| French (F) | Millimeter (mm) | Inch (") |
|------------|-----------------|----------|
| 6 | 1,99 | 0,08 |
| 6,5 | 2,15 | 0,09 |
| 8 | 2,65 | 0,11 |
| 10 | 3,31 | 0,13 |
| 11 | 3,64 | 0,15 |
| 11,5 | 3,81 | 0,15 |
| 12 | 3,98 | 0,16 |
| 13 | 4,31 | 0,17 |
| 14,4 | 4,77 | 0,19 |
| 15 | 4,97 | 0,20 |
| 20 | 6,63 | 0,27 |

| Inch (") | Millimeter (mm) |
|----------|-----------------|
| 0,032 | 0,81 |
| 0,035 | 0,89 |
| 0,038 | 0,97 |